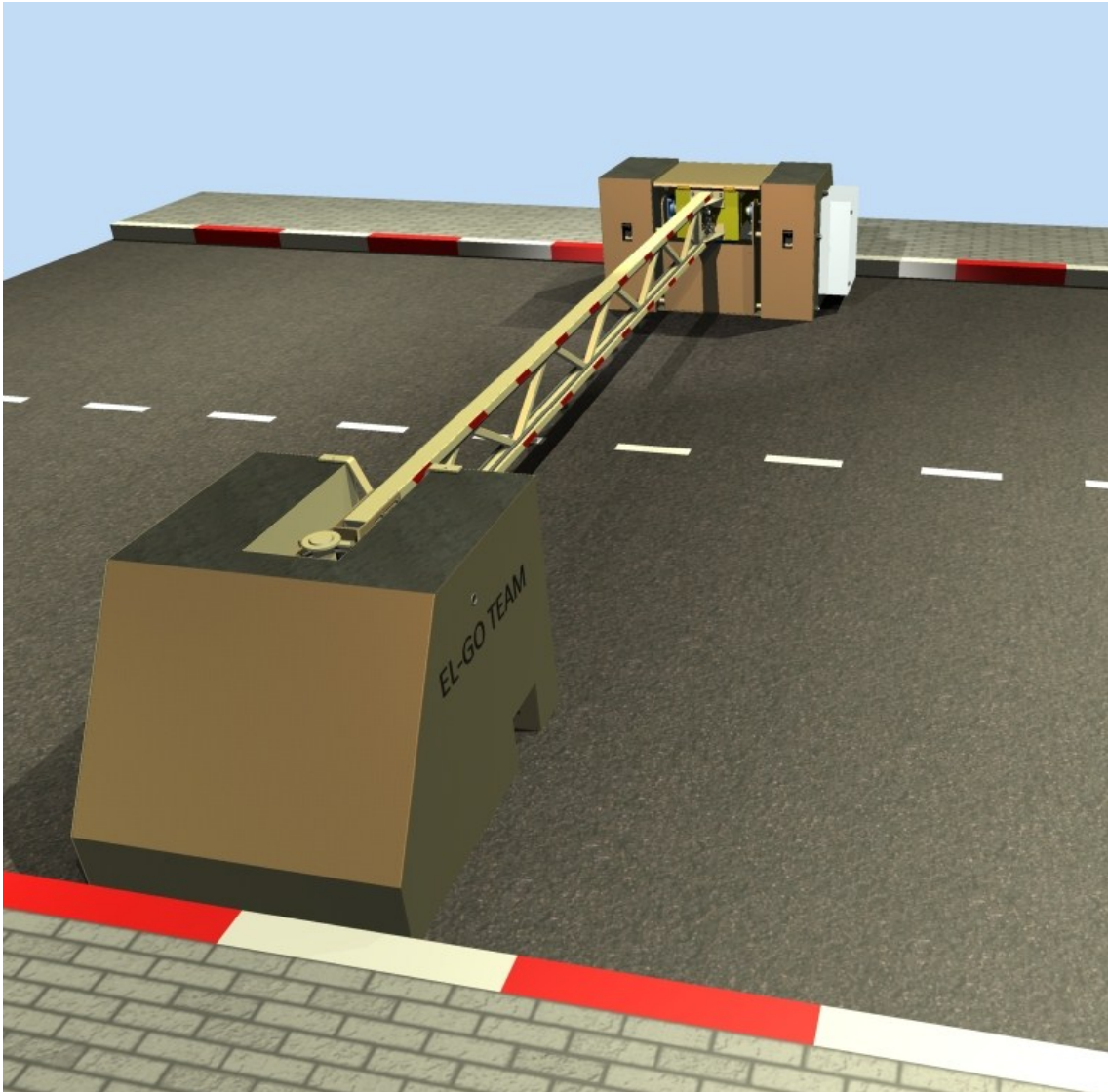




## **EL-09-1 Portable arm barrier K-8 certified**



- Rapid installation: Concrete pouring on site, fast installation 2-3 hours
- Portable: No excavation needed
- Easy to deliver & install: only metal cages delivered, to be filled with concrete on site.
- Low maintenance.
- Designed for security premises: airports, harbors, army bases etc.
- Heavy duty design.

**WEKNOWSECURITY**

## Technical specifications

Operation type	Electro hydraulic 3HP
Power supply	100-420 V ~1-3 phase +N All Types of power supply is optional
Arm length	Up to 6 m (5.6 m curb to curb)
Arm type	Heavy arm 50X100 rectangular profiles + steel wire cables Ø19
Operation speed	6 sec
Resistance	K-8 6.8 ton @ 65Kph
Locking mechanism	Electromagnetic (optional)
Controller	Smart industrial controller – PLC
Manual operation	Full manual operation with manual pump
Operating temperatures	-30 + 85 °c

- Can operate in any weather condition (heating unit is optional).
- Infra-red safety sensors.
- 3 cubic meters of concrete needed, total weight of the barrier is 8 tons.
- 30 Liter oil tank.

## Optional operating methods

- Mobile phone.
- Magnetic cards/ proximity tag.
- LPR cam.
- Radio receiver/ transmitter.
- Computer.

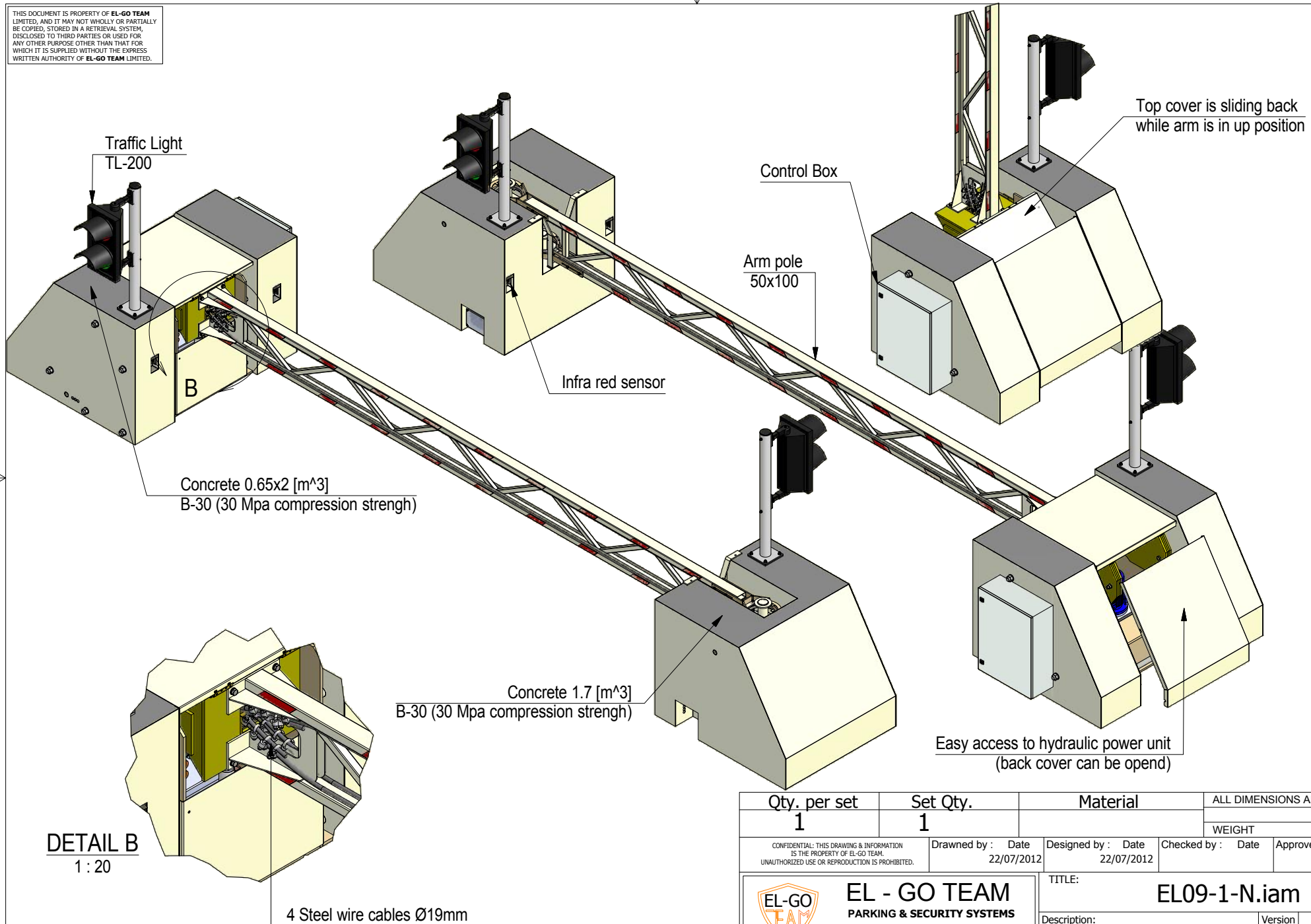



K-8 certified - 6.8 ton truck moving at 65 Kph

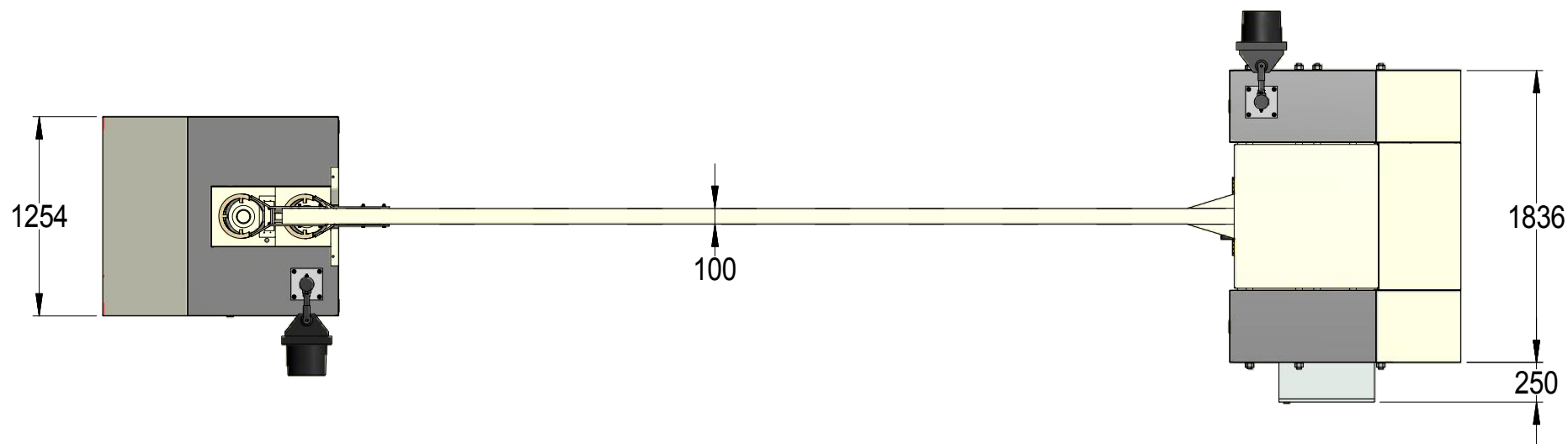
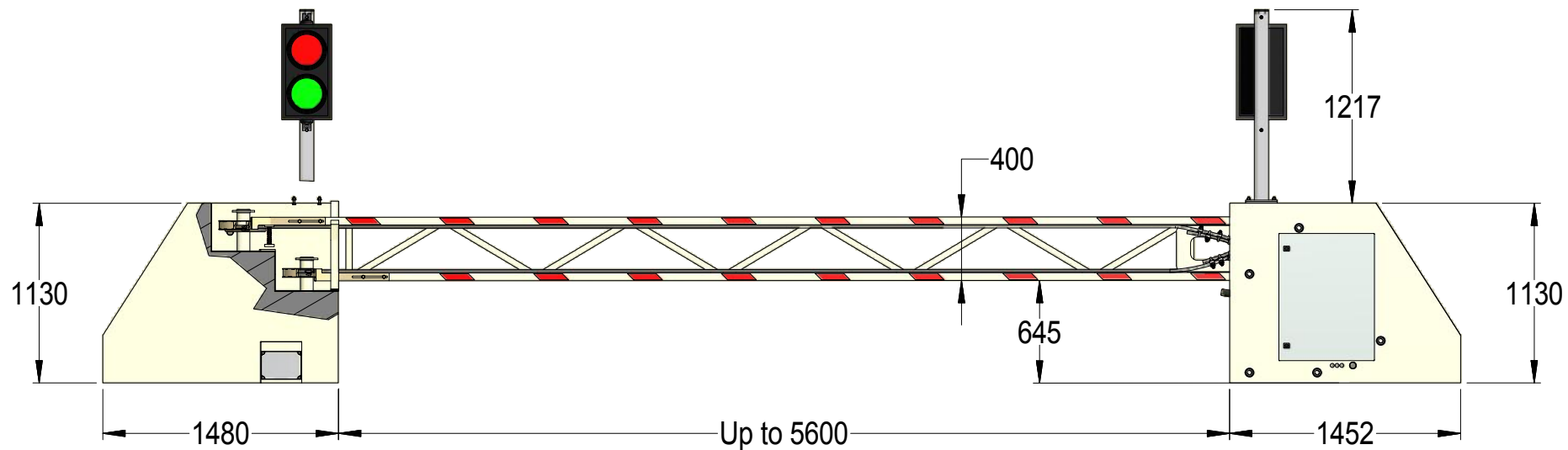
## Optional features

- Electromagnetic lock 500 Kg force. Secure the barrier in down position for maximum security.
- Loop detector. Prevents the barrier to be closed accidentally.
- Detection of driving direction.
- Traffic light/warning light assembled upon barrier.
- Warning buzzer.

THIS DOCUMENT IS PROPERTY OF **EL-GO TEAM** LIMITED, AND IT MAY NOT WHOLLY OR PARTIALLY BE COPIED, STORED IN A RETRIEVAL SYSTEM, DISCLOSED TO THIRD PARTIES OR USED FOR ANY OTHER PURPOSE OTHER THAN THAT FOR WHICH IT IS SUPPLIED WITHOUT THE EXPRESS WRITTEN AUTHORITY OF **EL-GO TEAM** LIMITED.



Qty. per set	Set Qty.	Material	ALL DIMENSIONS ARE IN MM			
1	1		WEIGHT N/A			
CONFIDENTIAL: THIS DRAWING & INFORMATION IS THE PROPERTY OF EL-GO TEAM. UNAUTHORIZED USE OR REPRODUCTION IS PROHIBITED.		Drawn by : Date 22/07/2012	Designed by : Date 22/07/2012	Checked by : Date	Approved by : Date	
 <b>EL - GO TEAM</b> <b>PARKING &amp; SECURITY SYSTEMS</b>  WWW.ELGOTEAM.COM		TITLE:  <b>EL09-1-N.iam</b>				
		Description:			Version 01	Sheet 1 / 3



Qty. per set		Set Qty.		Material		ALL DIMENSIONS ARE IN MM	
						WEIGHT	N/A
						Checked by : Date	Approved by : Date
						22/07/2012	22/07/2012
						TITLE:	
						EL09-1-N.iam	
						Description:	Version
							01
							Sheet
							2 / 3



**EL - GO TEAM**  
**PARKING & SECURITY SYSTEMS**  
[WWW.ELGOTEAM.COM](http://WWW.ELGOTEAM.COM)

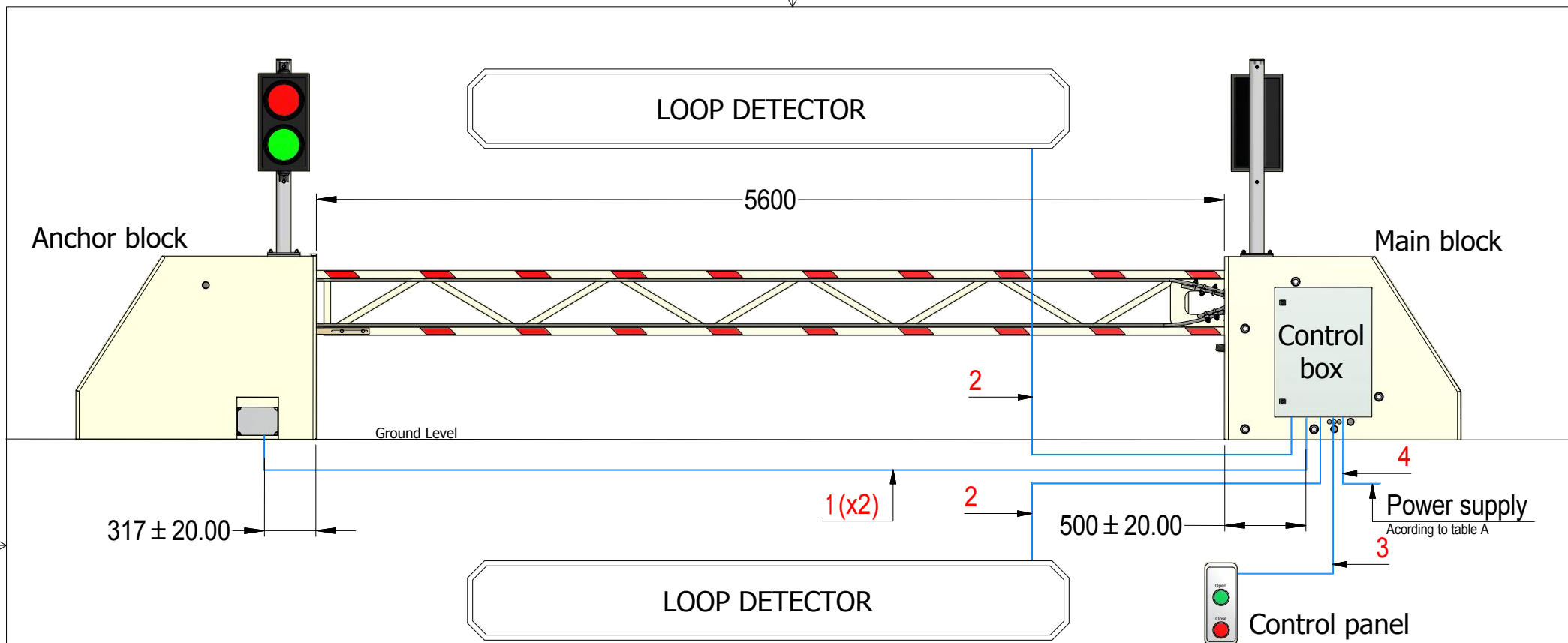
TITLE:

**EL09-1-N.iam**

Description:


Version  
01

Sheet  
2 / 3



Pipes and cables connction					
Pipe number	Description	Pipe type	Cable type	Notes	Purpose
1	Control box to anchor block	D40 Black PVC pipe	15x6005 NYY	control	Infra red sens. , traffic light , E. magnetic lock
1	Control box to anchor block	D40 Black PVC pipe	4x1.5 mm <sup>2</sup> XLPE NYY	traffic light power supply	traffic light
2	Control box to loop detector	D40 Black PVC pipe	1x1.5 mm <sup>2</sup> UL rating	-	Loop detector
3	Control box to control panel	D40 Black PVC pipe	15x6005 NYY	-	control panel
4	Power supply	D40 Black PVC pipe	5x6 mm <sup>2</sup> XLPE NYY	See table A	

Power supply options - Table A			
#	Power type	Current [A]	Frequency [Hz]
1	100-120 Vac ~1 Phase	Consult factory	-
2	200-240 Vac ~1 Phase	32	50-60
3	200-240 Vac ~3 Phase	25	48-62
4	380-420 Vac ~3 Phase (default)	16	50-60

Qty. per set	Set Qty.	Material		ALL DIMENSIONS ARE IN MM		
				WEIGHT N/A		
		Drawn by : Date 22/07/2012	Designed by : Date 22/07/2012	Checked by : Date	Approved by : Date	
 <b>EL - GO TEAM</b> <b>PARKING &amp; SECURITY SYSTEMS</b>  WWW.ELGOTEAM.COM			TITLE:  <b>EL09-1-N.iam</b>			
			Description:		Version 01	Sheet 3 / 3